

SMART CITIES: SMART WATER

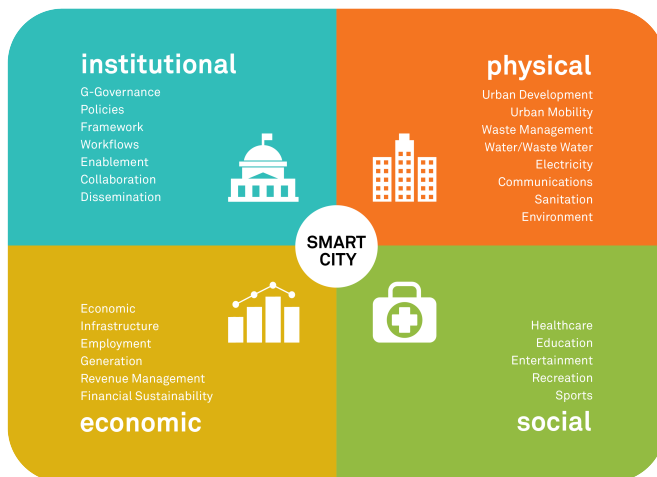
M.APP ENTERPRISE SOLUTION TEMPLATE FOR SMART WATER



SMART WATER

For the first time in history, more than 50 percent of the world's population lives in urban areas, and by 2050, nearly 70 percent of people will live in cities. With population growth exploding, cities are faced with increasing pressure on their aging infrastructure.

Whether it is urban space, transportation, utilities, public safety, or recreation, there is an increasing pressure on each city's assets and infrastructure. Cities must respond by meeting the changing demands of their citizens.



One of a city's most important pieces of critical infrastructure is its **water system**. With cities growing, it is inevitable that water consumption will grow as well. The term "smart water" points to water and wastewater infrastructure that ensures this precious resource - and the energy used to transport it - is managed effectively. Water systems are often overlooked yet are critical components of energy management in smart cities, typically comprising 25 to 50 percent of a city's total energy spend.

THE CHALLENGE

How can you maintain high quality service for your water resources that citizens have come to expect? Does your organization have the technology to gather meaningful and actionable data about the flow, pressure and distribution of your city's water network? Is it accessible to your citizens, who are now connected with their mobile devices and social networks?



Operators on the ground require quick access to correct information and enough expertise to quickly make decisions and fix reported issues. In the context of social networks facilitated by today's technology, any customer dissatisfaction immediately becomes public knowledge.

Does your organization have the access to necessary data to fix problems in a timely manner?

Public utilities need to address multiple challenges:

- Those related to the organization itself:
 - Maintaining the quality of provided service
 - Control of operating and maintenance costs
 - Environmental protection
 - Security of worksites and strategic development
- Those related to the community they serve:
 - Expectation of transparency and better management of public goods
 - Demand for high quality services at competitive prices

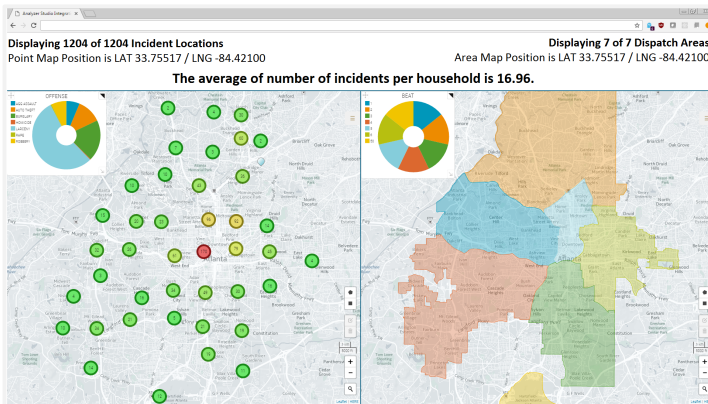
To successfully address these challenges, information must be continually collected, analyzed and distributed.

M.APP ENTERPRISE SOLUTION FOR SMART CITIES

A Smart City develops an intellectual advantage by delivering relevant geospatial data, workflows, and analytics into any device in the hands of local government and residents interested in making the city a better place to live.

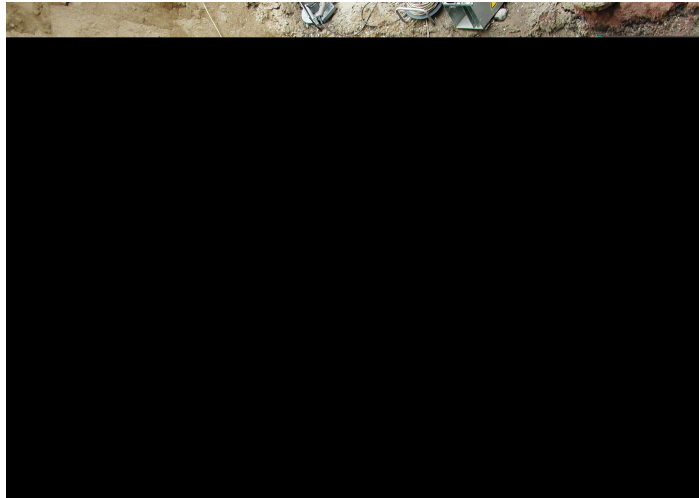
Hexagon Geospatial's M.App Enterprise solution can aid in pinpointing specific urban problems and producing relevant, actionable information. M.App Enterprise delivers a privately hosted option for organizations that want to realize the value of private or public cloud-based Smart Cities solution deployment.

M.App Enterprise is an extensive platform that delivers innovative and **industry-specific solutions** that can connect to any geospatial data source and provides:



- Superior geospatial processing
- Impactful analytics
- Workflow management
- High-quality, informative maps
- Advanced data editing capabilities
- Enterprise security management
- Desktop, Web or Mobile applications

A new B2B approach will provide ***Industry Specific Smart Solutions Templates*** that can be imported to quickly implement ready-to-use solutions for Public Administration, Utilities and Communications, Geospatial Management for Public Safety Systems, Geomarketing and other industries. **Smart Water** is one of these templates.



The M.App Enterprise **Smart Water** Solution is an online platform for geospatial infrastructure management of water and sewerage providing several advantages:

Operational & Strategic Advantages

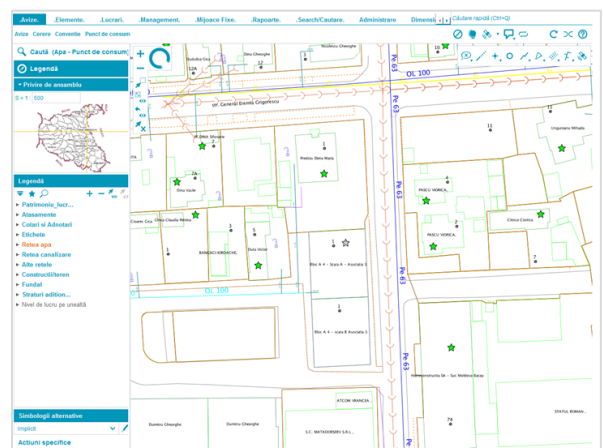
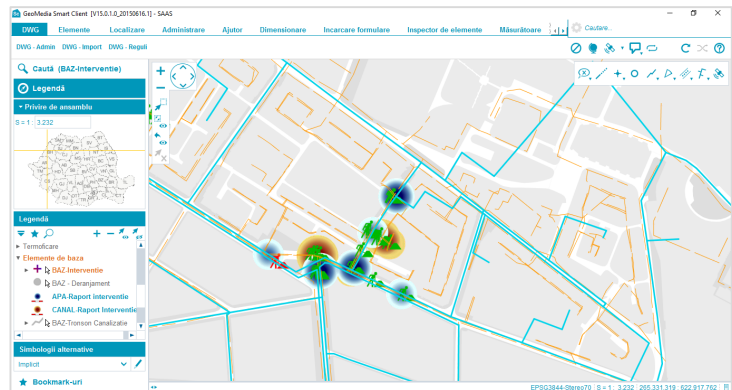
- Increase quality of the services provided, while reducing cost of network operation and maintenance
- Reduce number of incidents and remediation time
- Increase worksite security and environmental protection

Cost Reduction

- Reduce and control costs of software upgrades and maintenance
- Increase efficiency of information collection and processing

The M.App Enterprise Smart Water platform offers:

- Accessible content updated in real time
 - Management of technical information throughout the life cycle of the network
 - Updated background information (base map, satellite imagery, aerial photography)
 - Exchange of online data with other institutions (via publishing your own or by accessing data from other institutions)
- Information workflows
 - Intuitive applications for all levels of use from the organization, from field teams, to dispatchers and executive management
 - Dashboard for management
 - Data interfaces from partners and partners' communication to beneficiaries
 - Web services for interoperability with other institutions, including reporting to coordinating or regulatory agencies
- Easy and immediate access to high-tech resources
 - Robust geospatial platform that is available worldwide
 - Specialized applications designed and developed by geospatial industry leaders
 - The use of open standards for data modeling and solution interfaces
 - Security and availability of your data is maintained
 - Easy upgrades: no need to download new versions of applications or update servers
 - Professional technical support services: helpdesk, call center, e-learning
 - Access to professional technical assistance services: developing new analyses, workflows, and custom reports



- Compatibility with data from many different sources
 - Organizational data and information are no longer captive in their source applications; M.App Enterprise allows the use of data from any application that complies with current industry standards
 - Easy integration of technical data and other computer systems on your organization's network

The M.App Enterprise template for Smart Water lets you continue to provide high quality maintenance and service of your city's water resources even as your population grows and demands on your water network increase. The Smart Water template provides up-to-date analytics on your data and infrastructure that let you identify and respond to customer requests quickly.



ABOUT HEXAGON GEOSPATIAL

Hexagon Geospatial helps you make sense of the dynamically changing world. Known globally as a maker of leading-edge technology, we enable our customers to easily transform their data into actionable information, shortening the lifecycle from the moment of change to action. Hexagon Geospatial provides the software products and platforms to a large variety of customers through direct sales, channel partners, and Hexagon businesses. For more information, visit hexagongeospatial.com or contact us at marketing@hexagongeospatial.com.

Geospatial is part of Hexagon, a leading global provider of information technologies that drive productivity and quality across geospatial and industrial enterprise applications. Hexagon's solutions integrate sensors, software, domain knowledge and customer workflows into intelligent information ecosystems that deliver actionable information. They are used in a broad range of vital industries. Hexagon (Nasdaq Stockholm: HEXA B) has more than 18,000 employees in 50 countries and net sales of approximately 3.3bn USD. Learn more at hexagon.com and follow us @HexagonAB.

© 2017 Hexagon AB and/or its subsidiaries and affiliates. All rights reserved. Hexagon and the Hexagon logo are registered trademarks of Hexagon AB or its subsidiaries. All other trademarks or service marks used herein are property of their respective owners. Hexagon Geospatial believes the information in this publication is accurate as of its publication date. Such information is subject to change without notice.