



# POWER PORTFOLIO®









Change is constant – and its impacts can affect you personally. Whether man-made or naturally occurring, our changing landscape influences your plans and decisions. The way you understand that change enables you to respond, and to articulate your story.

Hexagon Geospatial helps you make sense of the dynamically changing world. From local businesses analyzing agricultural and natural resource needs to national mapping agencies, a wide variety of organizations across the globe rely on our technology every day to help them understand the effects of our geography.

Hexagon Geospatial's **Power Portfolio®** enables you to understand change and derive information you require to make mission- and business-critical decisions. With creative and intuitive interfaces, smart workflows, and automated technologies, the Power Portfolio enables you to transform multi-source content into actionable information:

- **Harness data production and big data management**
- **Customize and easily interpret geospatial analytics**
- **Deliver context and industry-specific information through the cloud to the online, digital, and mobile world**

## WHAT IS THE POWER PORTFOLIO?

The Power Portfolio combines the best photogrammetry, remote sensing, GIS and cartography technologies available. Flowing seamlessly from the desktop to server-based solutions, these technologies specialize in data organization, automated geoprocessing, spatial data infrastructure, workflow optimization, web editing, and web mapping. With this united approach, you are able to see the big picture, and make sense of all the change.



Simply put, the Power Portfolio organizes our product offering into representative categories describing your broader geospatial functions. Our industry-leading products retain their globally-recognized names while being positioned within the three Suites of the Power Portfolio:

- **Producer Suite** – Intelligently author, analyze, process, and map multiple sources of data
- **Provider Suite** – Comprehensively manage and deliver volumes of geospatial and business data
- **Platform Suite** – Efficiently build and deploy smart solutions that fit your needs

Individually, these are incredibly powerful suites of technology, containing industry leading products. We know and understand that every business has different needs, and so we provide the flexibility for you to hone in on the tools you require, easily combining technologies across products and suites.



We know and understand that every business has different needs, and so we provide the flexibility for you to hone in on the tools you require...

**POWER** Portfolio

# Producer Suite

## PRODUCER SUITE

The Producer Suite® empowers you to collect, process, analyze and understand raw geospatial data, and ultimately deliver usable information. This includes Hexagon Geospatial's desktop-based GIS, remote sensing, and photogrammetry offerings:

- **Process** large quantities of raw spatial information
- **Unearth** insightful information from imagery, terrain, RADAR and LIDAR data sources
- **Create**, update and analyze valuable geospatial information
- **Deliver** dynamic analysis and mapping products

### GIS

Our complete GIS package is a flexible solution for creating, updating, managing and analyzing your organization's valuable geospatial information. Highly specialized functionality makes it ideal for extracting information from an array of ever-changing data. With our GIS products, you can:

- **Generate** and update vector layers, perform dynamic spatial analysis and reports, and automatically create and update maps, all while managing data and map production more efficiently
- **Exploit** the power of your corporate database with support for extensive native spatial data-types, and with no middleware required!
- **Leverage** a high degree of performance while reliably meeting your demands through our unprecedented flexible architecture





## PHOTOGRAMMETRY

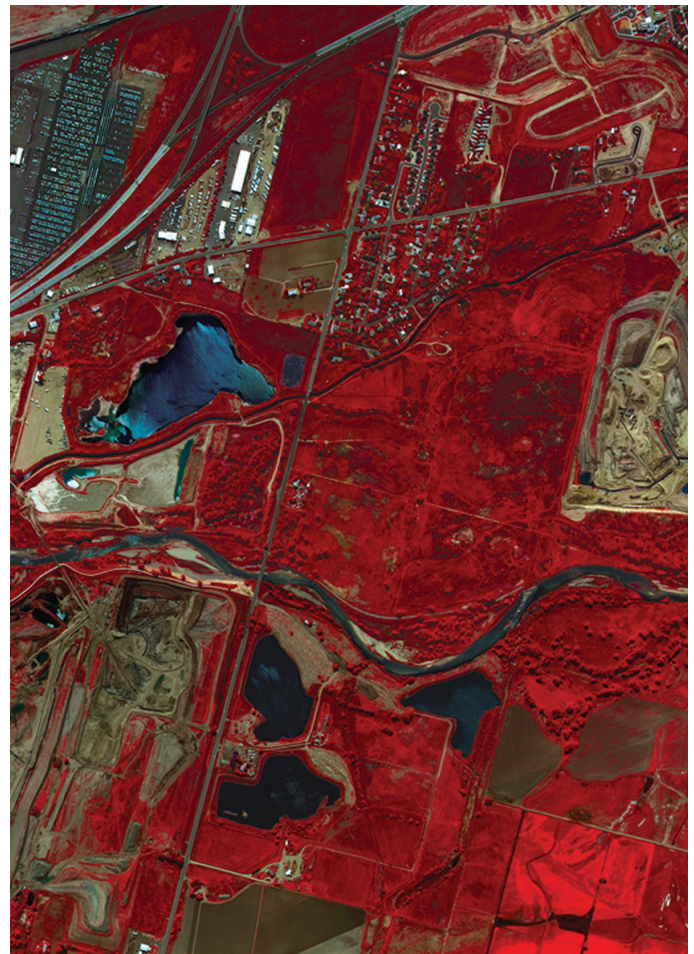
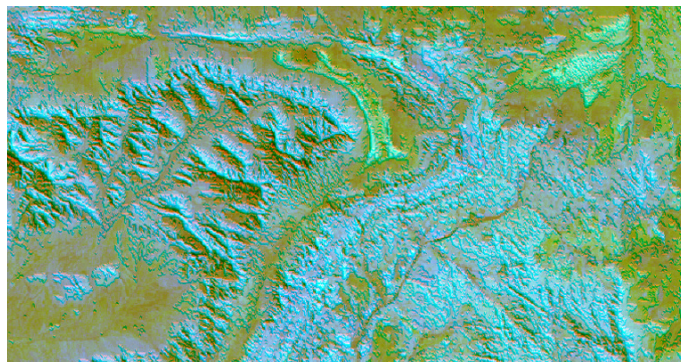
Connect large quantities of raw spatial information to locations on the earth's surface, and transform that data into actionable formats with our photogrammetry products.

- Collect and update features for your enterprise GIS using photogrammetric techniques
- Employ a single, seamless, process-driven workflow for triangulation, terrain generation and editing, ortho-mosaic creation and 3D feature extraction
- Leverage our photogrammetric expertise with extensions for real stereo visualization and precise 3D feature and terrain collection within other geospatial environments (such as Microstation, Esri and more)

## REMOTE SENSING

Deploy the world's most widely-used remote sensing software solution, combining imagery, terrain, RADAR, and point cloud data sources, to extract rich information that cannot be detected through visual inspection alone.

- Create remarkable value-added products seamlessly and simply through automated and wizard-driven workflows
- Combine our next-generation spatial modeler with your ingenuity and greatly expand your problem-solving capabilities
- Optimize your hardware investment by distributing batch processes across a network of computers, saving time and money



## POWER TO AUTHOR

### GIS

- GeoMedia®

### REMOTE SENSING

- ERDAS IMAGINE®
- ERDAS ER Mapper

### PHOTOGRAMMETRY

- ImageStation
- IMAGINE Photogrammetry
- ERDAS Extensions for ArcGIS





# **POWER** Portfolio Provider Suite

## PROVIDER SUITE

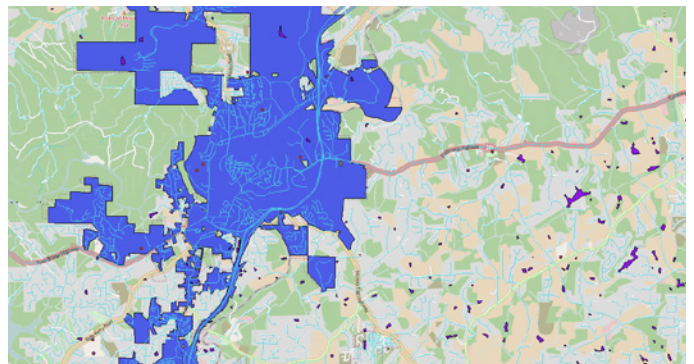
The Provider Suite® allows you to manage and deliver your data to others:

- Organize file-based, database and web-enabled geospatial and business data into a centralized library
- Distribute data from the cloud or on-premise across desktop, web and mobile applications
- Proliferate geospatial data within and across large, disparate organizations
- Optimize disk space requirements, reducing total cost of ownership

## DATA MANAGEMENT

Organize vast amounts of distributed geospatial and business data into one centralized and comprehensive, human-readable library.

- Provide a central data repository for all geospatial and business data, while minimizing infrastructure needs
- Enable complex searches of assets against rich metadata
- Distribute massive amounts of data to thousands of users efficiently and quickly, in a variety of standard and proprietary ways
- Empower your end-users to create value-added data products so they can make sense of change

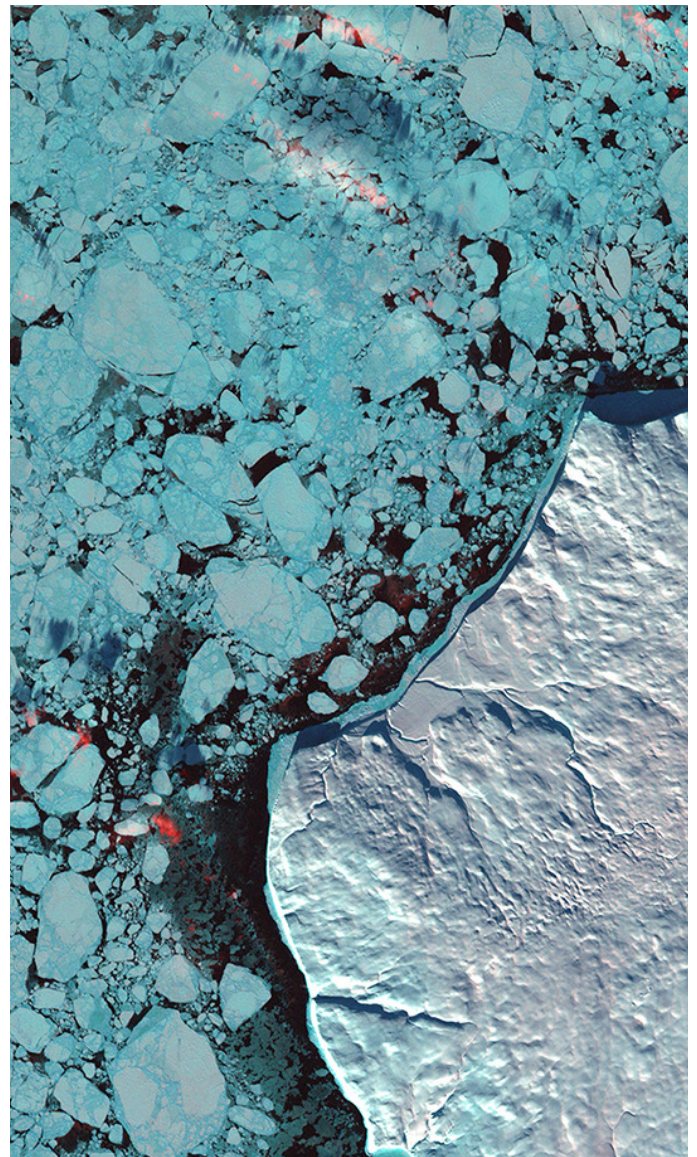




## COMPRESSION

Alleviate pressures associated with expanding imagery data holdings and the requirements of an increasingly demanding and diverse user base. Our patented, proprietary Enhanced Compression Wavelet (ECW) file format is the best in the business.

- Capitalize on the fastest, lowest-load, and lowest-cost image compression and decompression available on the market today
- Deploy a visually lossless file format that can curtail disk space requirements by up to 95 percent
- Reduce the cost of storage and associated management tasks through the tremendous efficiency of ECW technologies



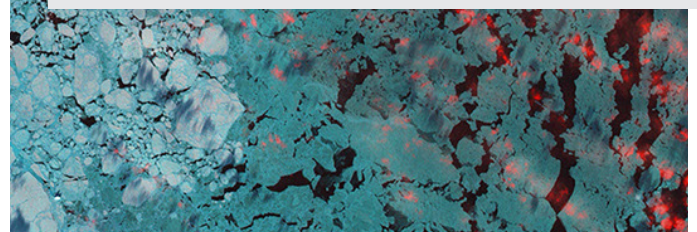
## ***POWER TO MANAGE***

### **DATA MANAGEMENT**

- ERDAS APOLLO

### **COMPRESSION**

- ECW products





# *POWER* Portfolio Platform Suite

## PLATFORM SUITE

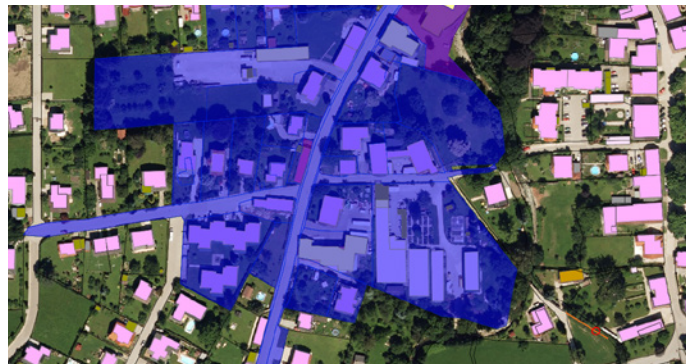
The Platform Suite® enables you to deliver information through the development of a web, mobile, or cloud solution. Information derived from the Platform Suite's technologies enable you to derive reliable, context-specific information necessary for making informed decisions.

- **Build** customized geospatial apps and solutions with a sophisticated set of developer-focused technologies
- **Extend** geospatial functionality where you need it – on the cloud, web, desktop and mobile devices – through modern and dynamic toolkits

## SMART WORKFLOWS

Empower those without a significant geospatial background to leverage advanced geospatial functionality in their workflows.

- **Integrate** geospatial information and focused business processes
- **Construct** powerful, highly constrained, map-based processes that guide the user step-by-step through creating and attributing geospatial data
- **Avoid** the cost and complexity of desktop GIS by utilizing supporting high-end functionality and disconnected workflows in a web-based client application





## WEB GIS

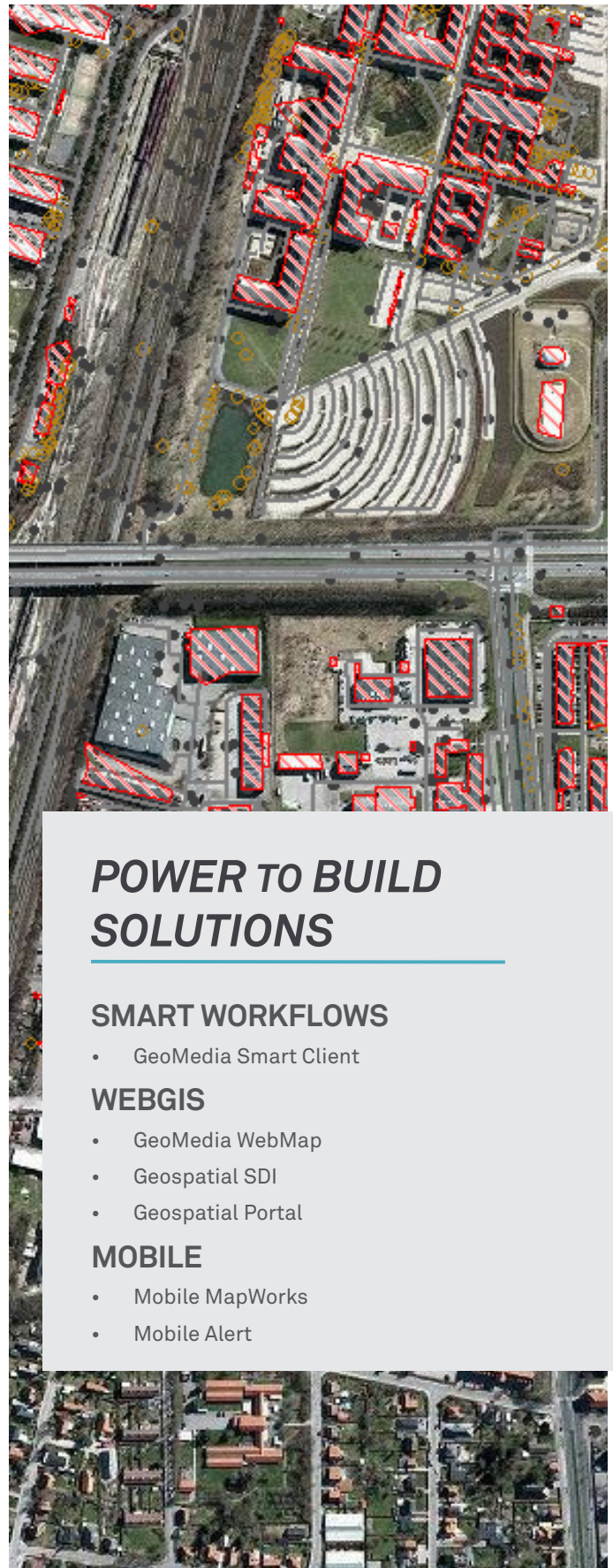
Bring real-time enterprise data access and sophisticated analysis to the web with a fully scalable and customizable server solution that deploys high-end web services and websites.

- **Deploy** a flexible solution for managing secure information and serving it to a wide variety of desktop, web, and mobile applications
- **Provide** secure integration with existing GIS, CAD environments, and business systems with our interoperable platform built on proven technological standards
- **Customize** your web interface, create user-defined queries and provide direct access to your geospatial data
- **Ensure** firm adherence to Open Geospatial Consortium (OGC®), INSPIRE, and International Standards Organization (ISO) standards for web services and metadata compliance

## MOBILE

Embracing the ever-broadening capabilities of today's mobile devices, we provide several pre-packaged, yet easily-customizable, mobile applications.

- **Access**, review and update geospatial data and asset information real-time in the field
- **Tap** into data and analytics to support specific business workflows
- **Crowdsource** incident reporting through a Hexagon Geospatial cloud-hosted environment that provides any end-user with a simple means to report on issues



## POWER TO BUILD SOLUTIONS

### SMART WORKFLOWS

- GeoMedia Smart Client

### WEBGIS

- GeoMedia WebMap
- Geospatial SDI
- Geospatial Portal

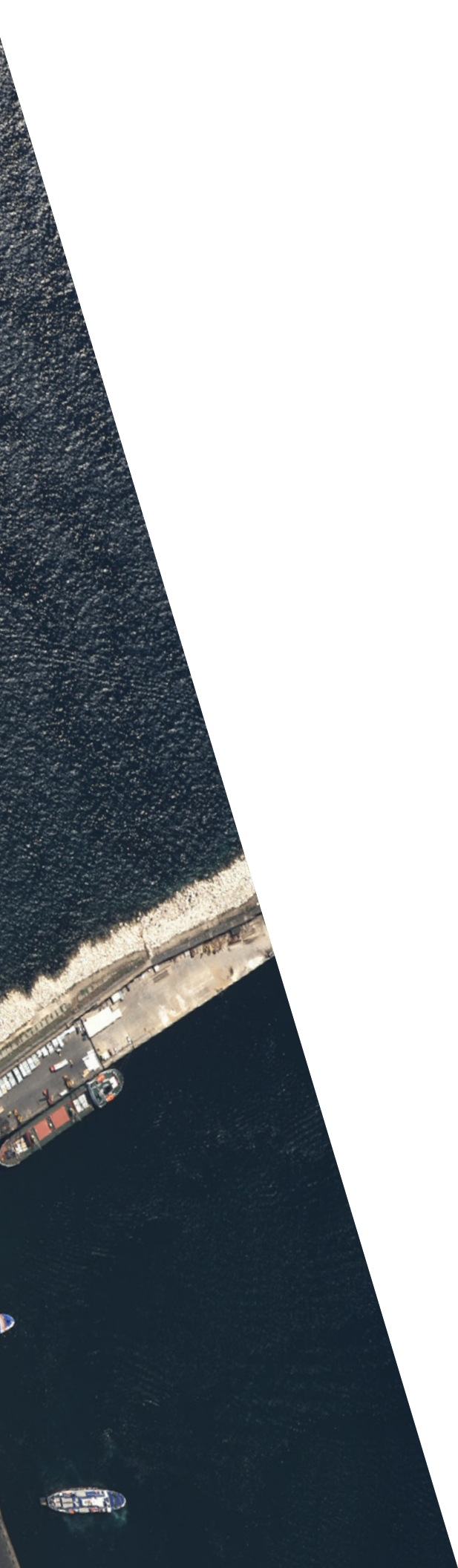
### MOBILE

- Mobile MapWorks
- Mobile Alert









## YOUR COMPLETE GEOSPATIAL SOLUTION

Hexagon Geospatial's **Power Portfolio** provides a simple, sophisticated, integrated approach to harnessing the traditional domains of GIS, remote sensing, photogrammetry, and mapping with applications across the enterprise.

As change happens, you can derive real-time information. Providing the utmost flexibility, the Power Portfolio provides a complete solution, and the building blocks to develop customized applications to meet your needs.

We provide software products and platforms through direct sales, channel partners, and Hexagon businesses, including the underlying geospatial technology to drive Hexagon Safety & Infrastructure industry solutions. Hexagon Geospatial plays a key role in Hexagon's multi-industry focus, leveraging the entire portfolio for a wide variety of geospatial needs. Hexagon is a leading global provider of design, measurement and visualization technologies.



