

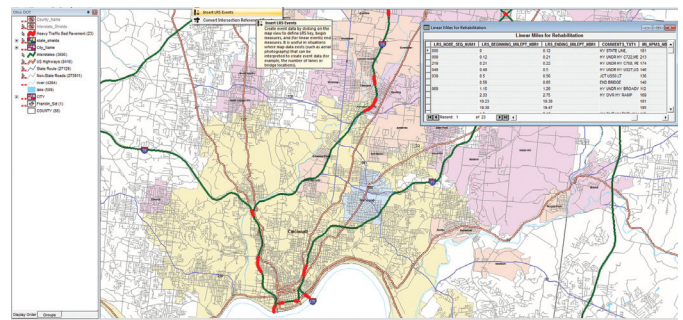


## GEOMEDIA® TRANSPORTATION MANAGER

The transportation industry's job is to move people and products without delay. With an efficient management system in place, supervising agencies can build and maintain the transportation infrastructure required for getting travelers and products to their destinations safely and on schedule, place repair and construction teams in the right place at the right time, and determine where agency funds should be spent. Hexagon Geospatial's GeoMedia Transportation Manager provides the key geospatial technology to help professionals in departments of transportation (DOTs), rail companies, waterway agencies, and pipeline operations to efficiently analyze and maintain the transportation infrastructure. Functionalities are included for building and maintaining a linear network model that will support linear referencing systems (LRS), multilevel linear referencing systems (MLRS), and vehicle routing applications.

### ANALYZE DATA QUICKLY & EASILY

A linear referencing system defines a feature or location by its linear distance from known points on a linear network. Using GeoMedia Transportation Manager's LRS Analysis, you can determine, for example, the location of dangerous traffic conditions, analyze the root cause, and make appropriate improvements. Rail transportation providers can use LRS Analysis to highlight track segments that need priority maintenance. Routing analysis provides flexibility and efficiency in the use of mobile assets. You can optimize the value of vehicles and personnel in the field, plan contingencies for problems such as damaged pipelines, assure proper coverage for emergency response services, and find the most efficient route to the facility you are looking for. Capabilities include finding best path and closest facility, analyzing coverage of emergency services for a portion of the network, and creating navigation



The LRS / MLRS capabilities within GeoMedia Transportation Manager 2016 allows organizations to join, merge and create location information from many different sources but all managed in one database and within one feature set.

directions between stops.

GeoMedia Transportation Manager provides a seamless integration between linear referencing and routing analysis. For instance, you can reference bridges and aggregate them to the network. This allows valuable clearance and weight constraint information, typically managed in a different system, to be leveraged for applications like routing oversized vehicles.

### MULTILEVEL LINEAR REFERENCING SYSTEM

GeoMedia Transportation Manager helps transportation agencies meet the challenges they face when using different linear referencing methods and geometric representations with multilevel linear referencing system (MLRS) capabilities. Various departments of a transportation agency can each collect data using different measurement methods and even different road-naming conventions. For example, if accidents are located by distance and direction from intersections and guardrail inventory is located by milepost, you would need to be able to use these different location methods together in order to locate run-off-the-road accidents that occurred where there is no guardrail. GeoMedia Transportation Manager's Multilevel LRS makes this simple by supporting multiple location reference methods (LRMs).



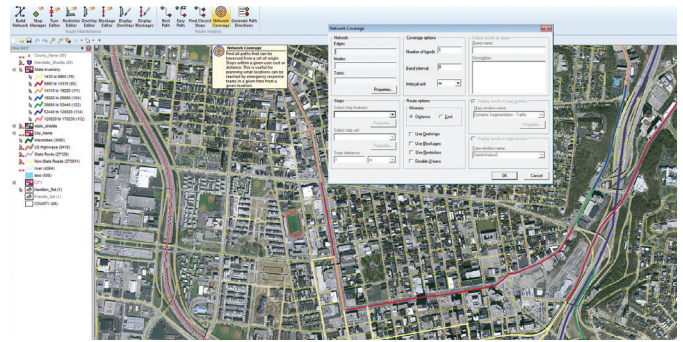
The MLRS enables the creation of a detailed and accurate temporal record through tools that allow time-stamping of all data changes, both administrative changes and those reflecting real-world alterations to the road network. These tools enable you to deploy a temporal LRS. GeoMedia Transportation Manager can automatically calibrate endpoints and breaks on the base network while also calculating mile points for breaks in the roadway event data. The automated calibration tools and datum-aware MLRS editing tools enable users to quickly make network adjustments and identify changes in the event data associated with any modified network sections.

## SENSITIVITY, WHAT-IF ANALYSIS & INFORMED DECISION MAKING

The GeoMedia Transportation Manager product can be used either with or without transaction management. Transaction management gives you the ability to model your network as it changes over time and then to use it for analyses such as evaluating the cost/benefit of various roadway improvement strategies or performing trend analysis for congestion, safety, and more.

Event overlay is the process of overlaying two event sets in order to find the intersection, union, or difference between the event records. The LRS Event Overlay command is very useful for performing cross-discipline analysis to locate areas that may require attention. For example, you can locate areas where there is both heavy traffic and few lanes to identify possible congestions areas, or you could identify areas with run-off-the-road accidents and no guardrails.

GeoMedia Transportation Manager enables you to properly maintain location information for event data as the road network changes, utilize the multiple cartographic representations of the network, support varying location reference methods (LRMs), and temporally analyze network data. This information will help plan improvements for deteriorating assets, will identify where your organization



GeoMedia Transportation Manager 2016 can assist organizations on route planning for traffic flows, snow removal, moving goods and services and even people!

is spending its money, and will provide critical information clearly and accurately. GeoMedia Transportation Manager increases the value of your data by turning it into business-critical, decision-support information.

## WHY TRANSPORTATION INDUSTRY LEADERS CHOOSE GEOMEDIA TRANSPORTATION MANAGER

Road, rail, pipeline, and waterway agencies around the world depend on Hexagon Geospatial for advanced geospatial transportation solutions. Benefits include:

- Robust data model for enterprise needs
- Comprehensive network maintenance environment
- Seamless environment for both linear referencing and routing
- Improved planning and decision making
- Enhanced Data sharing across the enterprise
- Simple access to data regardless of format
- An empowered mobile workforce
- Third-party partners to develop a complete industry solution
- Merger of geospatial data with information technology and business process improvement tools to create efficient workflows

## ABOUT HEXAGON GEOSPATIAL

Hexagon Geospatial helps you make sense of the dynamically changing world. Known globally as a maker of leading-edge technology, we enable our customers to easily transform their data into actionable information, shortening the lifecycle from the moment of change to action. Hexagon Geospatial provides the software products and platforms to a large variety of customers through direct sales, channel partners, and Hexagon businesses. For more information, visit [hexagongeospatial.com](http://hexagongeospatial.com) or contact us at [marketing@hexagongeospatial.com](mailto:marketing@hexagongeospatial.com).

Geospatial is part of Hexagon, a leading global provider of information technologies that drive productivity and quality across geospatial and industrial enterprise applications. Hexagon's solutions integrate sensors, software, domain knowledge and customer workflows into intelligent information ecosystems that deliver actionable information. They are used in a broad range of vital industries. Hexagon (Nasdaq Stockholm: HEXA B) has more than 18,000 employees in 50 countries and net sales of approximately 3.3bn USD.