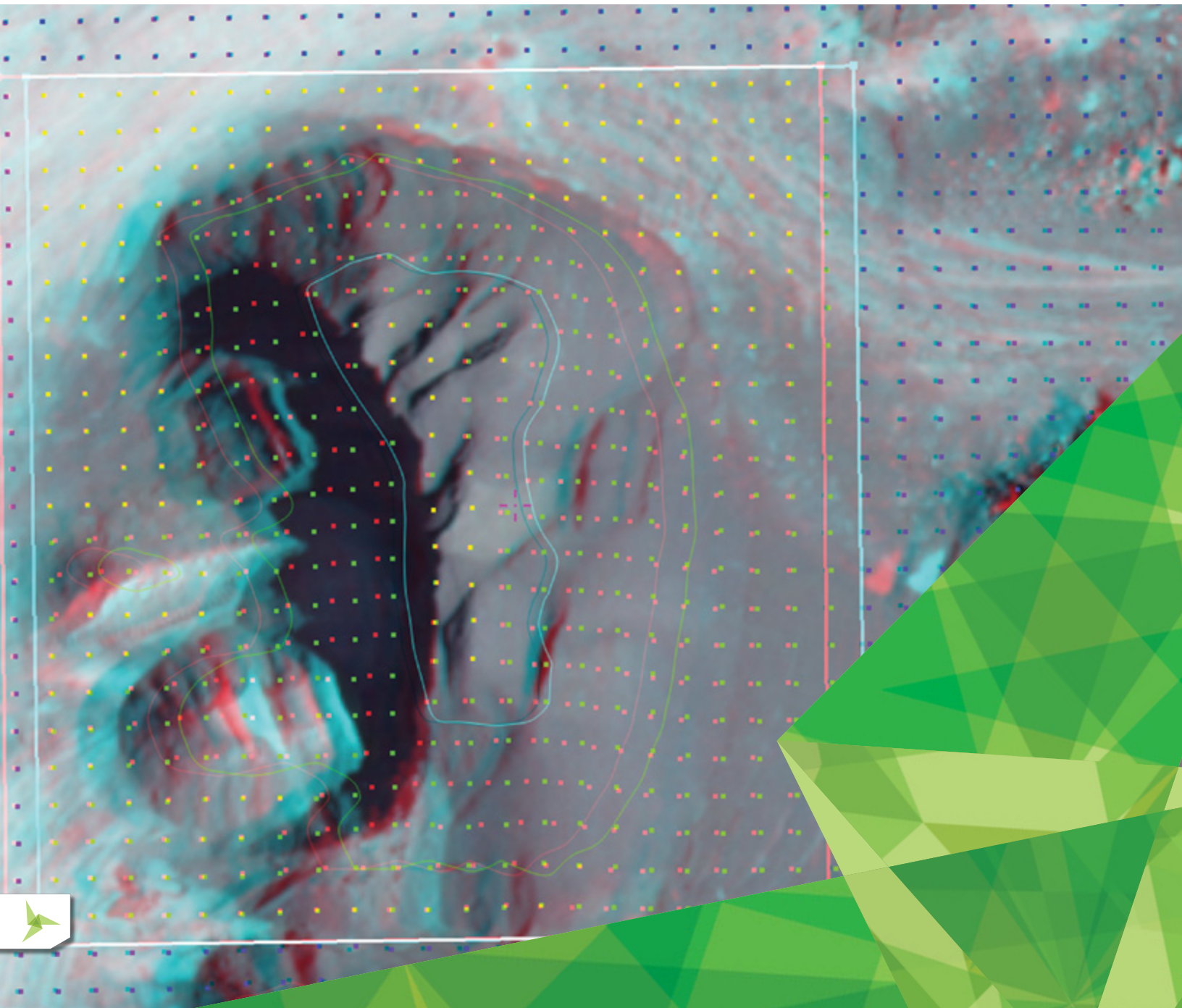
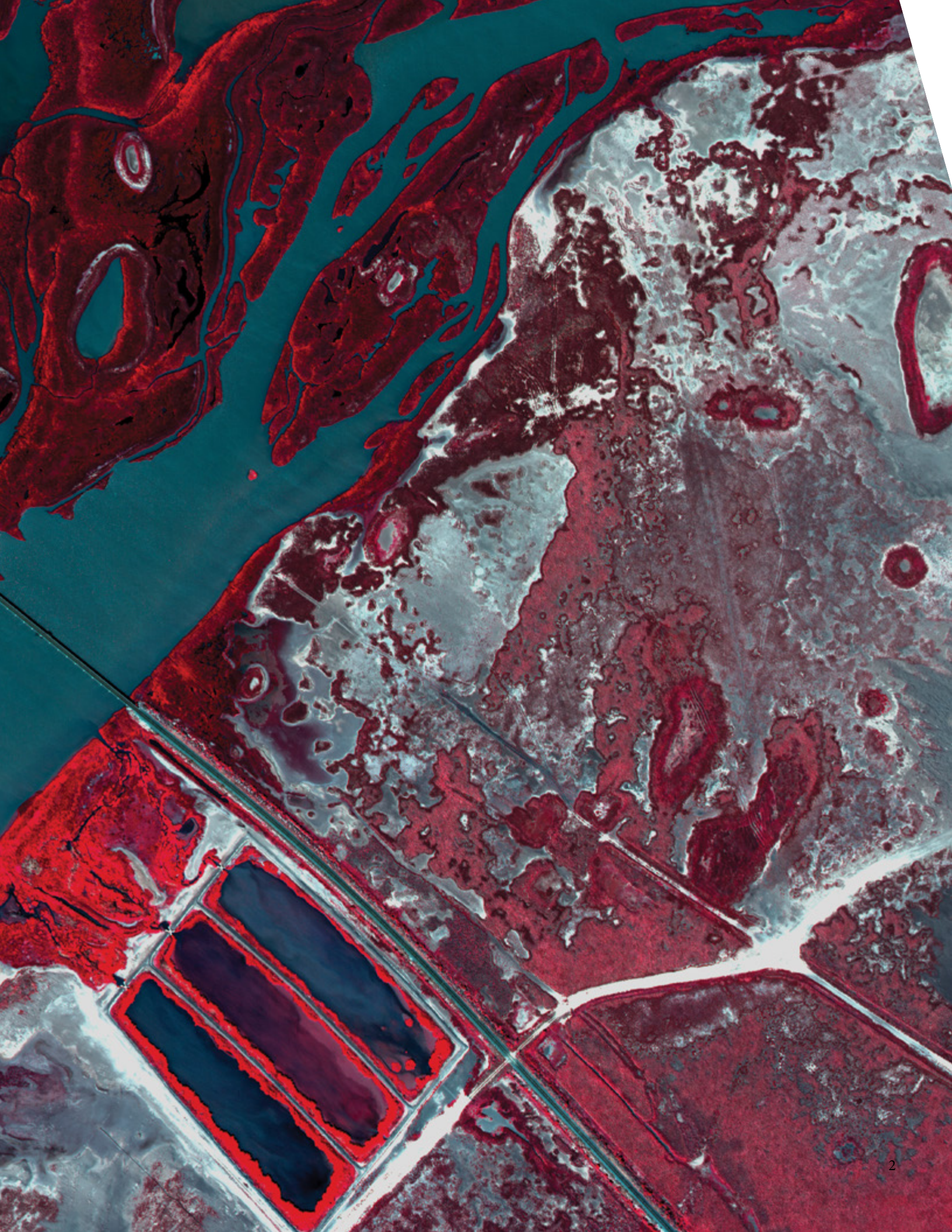
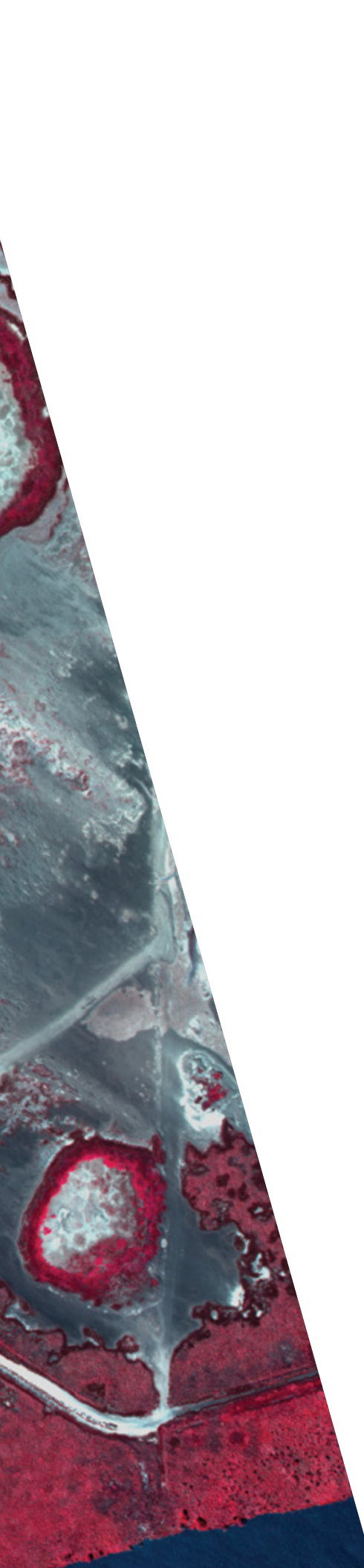


PHOTOGRAMMETRY

SPECIALIZED PRODUCTS FOR A VARIETY OF ORGANIZATIONS





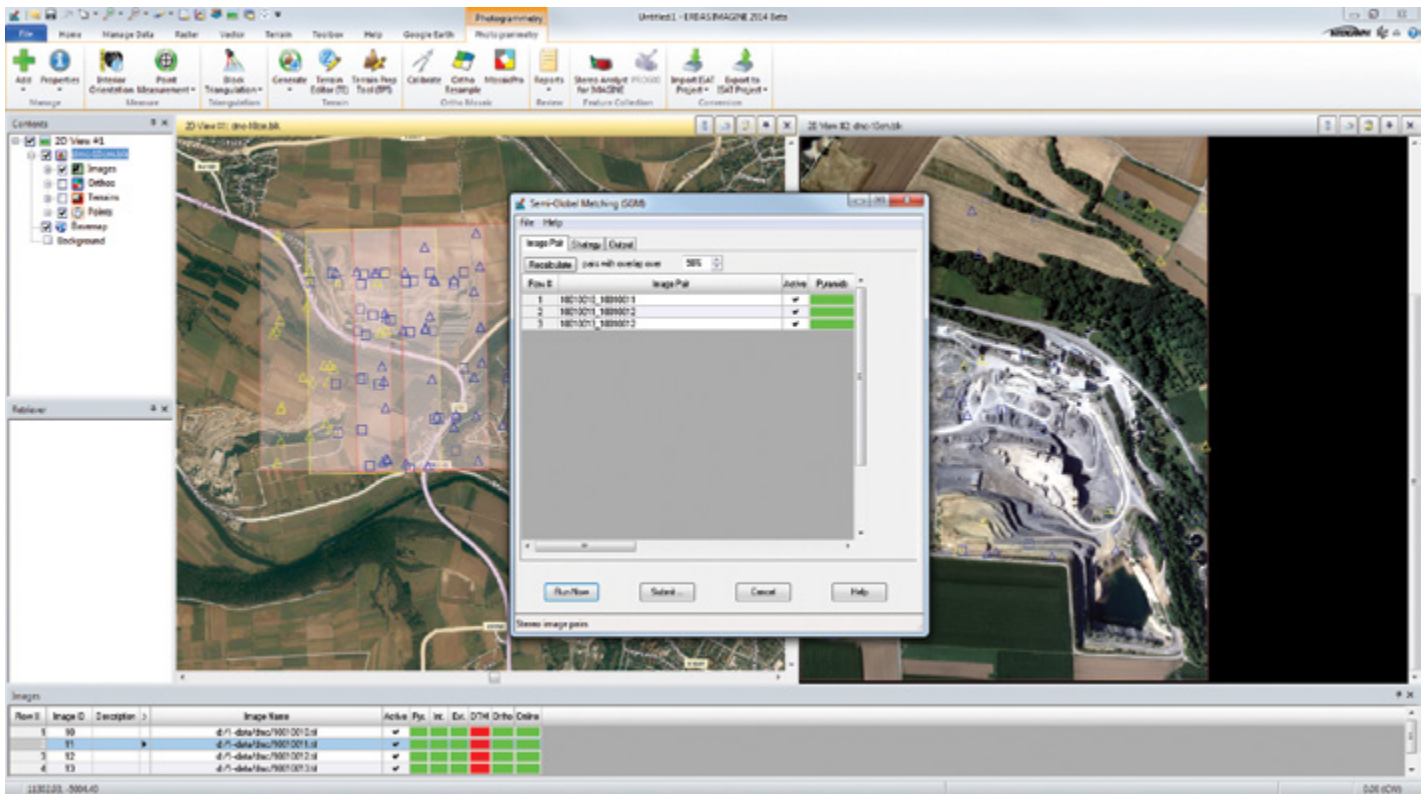


TRANSFORM IMAGERY FROM A PRETTY PICTURE TO A HIGHLY ACCURATE INFORMATION SOURCE

Photogrammetry—the art, science and technology of connecting imagery to accurate locations on the earth’s surface and creating accurate representations of the earth from remotely sensed data. Whether it be for huge, state-wide mapping missions, high-resolution imagery of a single 20-hectare project, or a highly accurate feature extraction, Hexagon Geospatial has the correct fit for your photogrammetry needs.

The Photogrammetry Products are offered within the PRODUCER SUITE of the Power Portfolio. The Producer Suite empowers you to collect, process, analyze and understand raw geospatial data, and ultimately deliver usable information. This includes Hexagon Geospatial’s desktop-based GIS, remote sensing, and photogrammetry offerings.

Because your needs vary so much depending on the type of project you are undertaking, Hexagon Geospatial divided our offerings into three product categories: Production, Project, and Stereo Photogrammetry.



The new SGM interface in IMAGINE Photogrammetry

PRODUCTION PHOTOGRAMMETRY

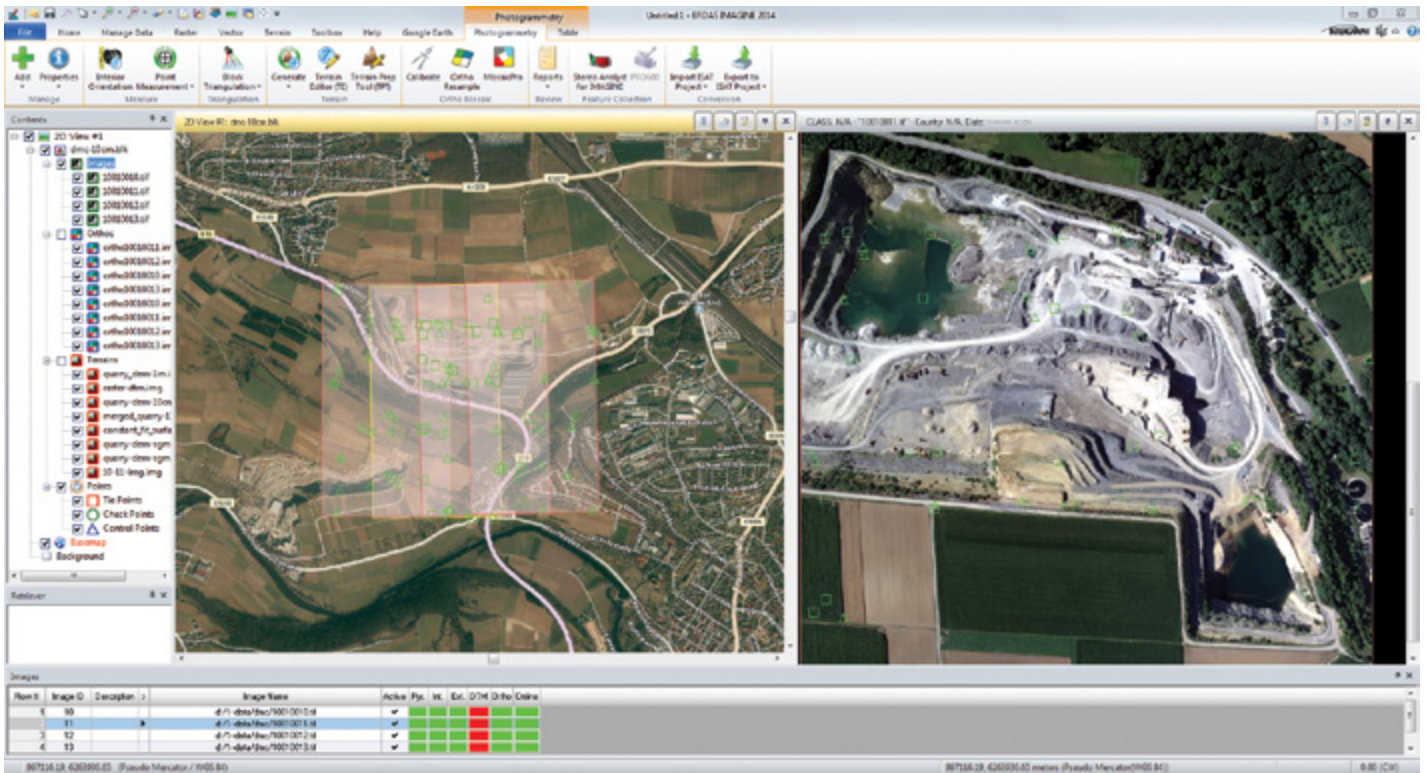
Production photogrammetry products are engineered to rapidly process massive volumes of incoming spatial data and to create or update large spatial databases. Designed to streamline the workflows of commercial and government photogrammetry and production mapping customers, these products facilitate the timely and accurate delivery of immense quantities of data.

IMAGESTATION®

Designed from the ground up for high-volume photogrammetry and production mapping customers, ImageStation streamlines and automates processes while still supporting the most comprehensive photogrammetric workflow on the market. It is a photogrammetry factory, efficiently and powerfully moving large quantities of raw spatial information to an actionable and exploitable format. Simplified project creation gets your projects up and running quickly. Early verification of orientation and triangulation quality means less labor lost trying to fix problems. GIS- and CAD-based 3D feature collection and editing saves time by working directly in your native database.

Digital terrain model (DTM) collection and editing ensure the accuracy of your elevation data with a few simple validation steps. Dense matching with the semi-global matching algorithm creates highly dense, highly accurate point clouds from your imagery, eliminating the need for more expensive data collection flights. Streamlined, multi-user orthophoto and mosaic production using aerial and satellite imagery puts the power of state-of-the-art technology to work in creating planimetrically accurate and aesthetically pleasing orthophotos.

ImageStation within the GeoMedia® context facilitates the creation of continuous, topologically accurate, and attributed map layers stored in a variety of open formats. This integration further enhances the process of creating and/or updating your GIS through the use of photogrammetric techniques which directly store your data as an asset within a corporate database. ImageStation is offered in components, allowing you to customize your solution to meet your exact specifications.



The Ribbon interface for IMAGINE Photogrammetry

PROJECT PHOTOGRAMMETRY

Project photogrammetry products are ideal for users who work with smaller quantities of raw imagery and varied types of data (such as raster, vector, GIS, LiDAR). These projects involve a wide variety of different data formats and sensors, and are generally set up as the first step of a greater processing workflow, including steps such as change detection or image classification.

IMAGINE PHOTOGRAMMETRY

A fully functional photogrammetry system packaged in a user-friendly environment, IMAGINE Photogrammetry provides results even for photogrammetry novices. Even though it is designed for a wide variety of users, it does not cut corners on either features or accuracy. State-of-the-art photogrammetry technology such as full analytical triangulation, digital terrain model generation, orthophoto production, mosaicking, and 3D feature extraction have been included in the easy-to-use environment. By automating precision measurement and including flexible operations such as terrain editing (including stereo) and feature extraction, IMAGINE Photogrammetry increases productivity while ensuring high accuracy.

Tight integration with ERDAS IMAGINE® means that this is the ideal photogrammetric package

for projects involving varied types of data and further processing and analysis of airborne and satellite imagery.

IMAGINE Photogrammetry offers functional add-on modules that greatly expand its already powerful central capabilities. IMAGINE Terrain Editor facilitates the visualization, verification, and editing of Digital Terrain Models (DTMs) in stereo. Adding IMAGINE Auto DTM provides a choice of pixel correlation applications for creating high-density terrain and point clouds from stereo imagery.



Anaglyph can also be used to view in stereo if you don't have the hardware for true color stereo in IMAGINE Terrain Editor.

STEREO PHOTOGRAMMETRY

If you want to work within a GIS or CAD product (GeoMedia, ArcGIS®, MicroStation®, Bentley® Map, or Bentley Map Enterprise) to extract features or edit maps or terrain using stereo image pairs, a stereo photogrammetry product might be ideal for you.

IMAGESTATION

ImageStation Stereo for GeoMedia enhances the feature collection capabilities of GeoMedia by providing stereo image display with on-the-fly enhancement, smooth roam, and dynamic zoom with photogrammetrically accurate 3D cursor tracking and stereo vector superimposition. ImageStation DTM for GeoMedia extends ISSG's capabilities to include collection and editing of terrain data.

ImageStation Stereo Display, ImageStation Feature Collection, and ImageStation DTM Collection provide stereo image and vector display, feature collection and editing, and DTM collection and editing in the MicroStation environment.

ERDAS EXTENSIONS FOR ARCGIS®

ERDAS Extensions for ArcGIS provide powerful stereo viewing, feature collection and terrain editing capabilities within the ArcGIS environment. Stereo Analyst for ArcGIS, furnishes you with a comprehensive toolbox for the creation and revision of a comprehensive database of feature data. Adding stereo visualization to your GIS not only improves the interpretation of images, but it greatly enhances the precision of feature collection, leading to greater accuracy in your resulting layers. Tightly integrated with ArcGIS, Stereo Analyst for ArcGIS enables stereo collection inside a familiar environment.

Hexagon Geospatial offers two optional add-ons that extend Stereo Analyst's functionality. ERDAS Terrain Editor for ArcGIS® enables you to update a Geodatabase Terrain file. FeatureAssist for ArcGIS offers a great variety of roof structures you can collect in the ESRI Multipatch format.

PRO600

The PRO600 products are specially designed to optimize production-mapping organizations that use Bentley MicroStation, Bentley Map, and Bentley Map Enterprise. PRO600 CART enables 3D feature collection and editing in those environments, while PRO600 DTM provides a variety of tools for terrain modeling. Both PRO600 products use technology including stereo viewing from our IMAGINE Photogrammetry product line, allowing CAD and GIS users to benefit from the robust, high-throughput capabilities that are trusted by mapping professionals worldwide.

A PRODUCT FOR EVERY USER

Hexagon Geospatial's full range of photogrammetry products offer ideal solutions for every type of photogrammetry customer. Whether your photogrammetric workflow involves rapid processing of large quantities of imagery, getting imagery ready for specific projects, or working within a separate GIS or CAD product, Hexagon Geospatial provides a product geared to meet your requirements. All products in the lineup are backed by Hexagon Geospatial's extensive background in remote sensing and photogrammetry and a proven track record of incorporating customer experience into product improvements. Combining this rich history and a laser-like focus on accuracy and high-throughput, Hexagon Geospatial photogrammetry products ensure top-notch results for any workflow.



Use the advanced editing tools in IMAGINE Terrain Editor and see your results in the stereo viewer.

POWER PORTFOLIO	PRODUCT & INTERACTION
PRODUCER SUITE	Open or create your Photogrammetry project directly in ERDAS IMAGINE with the IMAGINE Photogrammetry suite.
	Raster backdrops based on the ultra-fast ECWP streaming protocol may be directly consumed in ERDAS IMAGINE and IMAGINE Photogrammetry.
	ImageStation projects can be directly consumed in GeoMedia for ortho creation and mosaicking.
	Directly work on photogrammetry projects in GeoMedia with ImageStation Stereo for GeoMedia, ImageStation DTM for GeoMedia, ImageStation OrthoPro and ImageStation PixelQue
	Use Stereo Analyst for ArcGIS to work directly inside your ArcGIS environment and collect models in a 2D/3D stereo viewer.
PROVIDER SUITE	Consume raster backdrops based on the ultra-fast ECWP streaming protocol from ERDAS APOLLO.
PLATFORM SUITE	ImageStation projects can be directly consumed in GeoMedia for ortho creation and mosaicking.
	PRO600 uses our fully integrated stereo viewer inside of Bentley MicroStation products supporting 2D/3D viewing and DGN feature collection.

ABOUT POWER PORTFOLIO

The Power Portfolio from Hexagon Geospatial combines the best photogrammetry, remote sensing, GIS and cartography technologies available. Flowing seamlessly from the desktop to server-based solutions, these technologies specialize in data organization, automated geoprocessing, spatial data infrastructure, workflow optimization, web editing, and web mapping.

The Producer Suite enables you to intelligently author, analyze, process, and map multiple sources of data.



ABOUT HEXAGON GEOSPATIAL

Hexagon Geospatial helps you make sense of the dynamically changing world. Known globally as a maker of leading-edge technology, we enable our customers to easily transform their data into actionable information, shortening the lifecycle from the moment of change to action. Hexagon Geospatial provides the software products and platforms to a large variety of customers through direct sales, channel partners, and Hexagon businesses. For more information, visit www.hexagongeospatial.com or contact us at marketing@hexagongeospatial.com.

Hexagon Geospatial is part of Hexagon, a leading global provider of information technologies that drive productivity and quality across geospatial and industrial enterprise applications. Hexagon's solutions integrate sensors, software, domain knowledge and customer workflows into intelligent information ecosystems that deliver actionable information. They are used in a broad range of vital industries. Hexagon (Nasdaq Stockholm: HEXA B) has more than 18,000 employees in 50 countries and net sales of approximately 3.3bn USD. Learn more at hexagon.com and follow us @HexagonAB.

© 2018 Hexagon AB and/or its subsidiaries and affiliates. Hexagon and the Hexagon logo are registered trademarks of Hexagon AB or its subsidiaries. All other trademarks or servicemarks used herein are property of their respective owners. Hexagon Geospatial believes the information in this publication is accurate as of its publication date. Such information is subject to change without notice.