



PHOTOGRAMMETRY IN BENTLEY® CAD/GIS ENVIRONMENTS

PRO600 PRODUCTS

CAD-based systems have proven tremendously popular and play a leading role in modern photogrammetric production. Bentley® MicroStation® has emerged as the CAD system of choice for many users in the photogrammetric community. As Bentley Map and Bentley Map Enterprise have been introduced to the market, they've taken a place alongside MicroStation as a common component of many photogrammetry workflows.

The PRO600 products are specially designed to optimize production-mapping organizations that use Bentley MicroStation, Bentley Map, and Bentley Map Enterprise. PRO600 CART enables 3D feature collection and editing in those environments, while PRO600 DTM provides a variety of tools for terrain modeling. Both PRO600 products use technology from our IMAGINE Photogrammetry product line, allowing CAD and GIS users to benefit from the robust, high-throughput capabilities that are trusted by mapping professionals worldwide.

BOTH PRO600 PRODUCTS FEATURE:

- Seamless integration with the Bentley environment, reducing the learning curve and maximizing efficiency for novice and experienced Bentley users
- High-performance stereo viewing engine
- Sophisticated data collection and editing tools
- Support for a variety of input devices, including TopoMouse, Z/I Mouse, and more
- Close integration with IMAGINE Photogrammetry

PRO600 CART

Feature collection and editing is central to photogrammetric production. For photogrammetry professionals, delivering geographic data to clients in a cost-effective, timely, and consistent manner is a top priority. Having the right software for feature collection and editing is vital to success.

PRO600 CART provides a set of cartographic presentation tools within your Bentley environment, including line patterning, polygon hatching, symbology, contour annotation, slope hachure, and manuscript grid placement. It also includes extensive feature-coding capabilities. Using PRO600 CART, you can also display imagery in both the Bentley product viewers and IMAGINE Photogrammetry stereo-based viewers, and even link the viewers so you can control and use them at the same time.

KEY FEATURES FOR PRO600 CART INCLUDE:

- Symbology settings stored in a feature definition library
- Easy-to-edit feature definition library
- Multiple collection modes and tools to enhance productivity
- Parallel-line generation with up to 20 parallel lines simultaneously
- Button mapping for input devices
- Automatic periodic design file backup
- Undo and redo
- Ground control point utility that allows you to plot ground control points as annotated symbols
- Data editing, including contour rounding and centerline generation



PRO600 DTM

PRO600 DTM provides a stereo editing environment and an advanced toolset for terrain modeling. Dynamically update or edit your terrain files using the mensuration tools in the PRO600 DTM environment with the capturing capability in the stereo viewer. PRO600 DTM includes IMAGINE Photogrammetry block file support, so movement in and out of your CAD software is seamless.

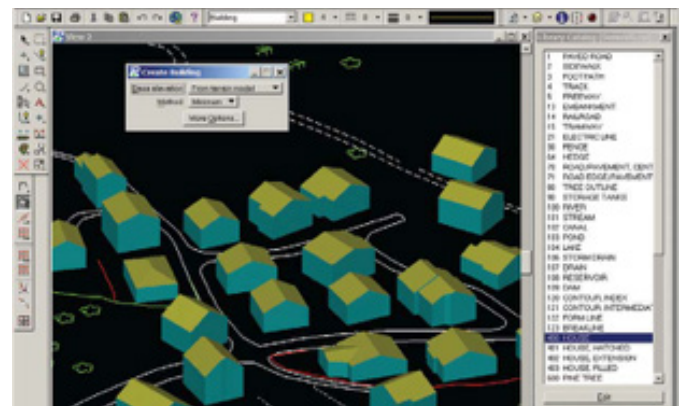
PRO600 DTM lets you import an IMAGINE Photogrammetry terrain dataset into your Bentley product. This enables you to merge MicroStation design file data into an IMAGINE Photogrammetry terrain dataset along with specifications about how the data is to be used (breaklines, polygon flattening, etc.). It also lets you interpolate continuously from an IMAGINE Photogrammetry terrain dataset, using the elevation as the active depth within the MicroStation view. You can also convert 2D design files into 3D by draping the vector data over an IMAGINE Photogrammetry dataset. PRO600 DTM requires PRO600 CART.



MicroStation design file graphics are displayed by PRO600 in full 3D stereo.



PRO600 features 3D feature extraction in a CAD environment.



PRO600 provides tools that aid the extraction of 3D building models from imagery.

About Hexagon Geospatial

Hexagon Geospatial helps you make sense of the dynamically changing world. Known globally as a maker of leading-edge technology, we enable our customers to easily transform their data into actionable information, shortening the lifecycle from the moment of change to action. Hexagon Geospatial provides the software products and platforms to a large variety of customers through direct sales, channel partners, and Hexagon businesses. For more information, visit hexagongeospatial.com or contact us at marketing@hexagongeospatial.com.

Hexagon Geospatial is part of Hexagon, a leading global provider of information technologies that drive productivity and quality across geospatial and industrial enterprise applications. Hexagon's solutions integrate sensors, software, domain knowledge and customer workflows into intelligent information ecosystems that deliver actionable information. They are used in a broad range of vital industries. Hexagon (Nasdaq Stockholm: HEXA B) has more than 18,000 employees in 50 countries and net sales of approximately 3.3bn USD. Learn more at hexagon.com and follow us @HexagonAB.