



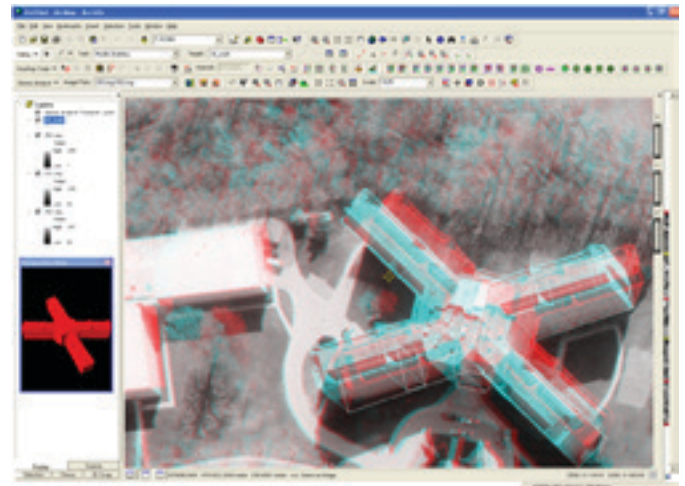
ERDAS EXTENSIONS FOR ARCGIS®

STEREO ANALYST®, FEATUREASSIST & ERDAS TERRAIN EDITOR

Hexagon Geospatial Stereo Analyst® for ArcGIS® integrates seamlessly with ArcGIS® to give you stereo visualization in addition to the feature collection and vector editing tools you're already using. Stereo visualization lets you distinguish the features in your imagery faster and more easily, and increases the accuracy of the features that you collect. For example, in 2D imagery it may be difficult to distinguish an overpass from an intersection, and some objects may overlap others. Stereo allows you to see these features in the imagery just as you would see them in real life – in 3D.

Hexagon Geospatial also provides two add-on enhancements for Stereo Analyst – FeatureAssist and ERDAS Terrain Editor. FeatureAssist for ArcGIS® collects complex building roofs, with the option to extend these roofs to the ground to create realistic 3D models. ERDAS Terrain Editor for ArcGIS® enables you to edit geodatabase terrains.

ERDAS Extensions for ArcGIS are simple, affordable products to generate feature layers based on imagery. Instead of outsourcing the work or struggling with a large application that includes functionality you don't need, you can simply add ERDAS Extensions for ArcGIS to the software you already use. You can save money by completing the work yourself, and because it works inside the ArcGIS interface you already know, it doesn't require a lot of training or ramp-up time.



Feature collection in a stereo window inside of the ArcGIS environment

STEREO ANALYST FOR ARCGIS

- Work with any level of ArcGIS for Desktop
- Use standard ArcMap editor tools to create and modify features within the stereo view
- Enable multiple users to concurrently edit topology in ArcGIS
- Import data from several industry-standard triangulation package formats
- Load “oriented images” – including NITF and .SUP files – via the Add Data dialog in ArcMap
- Perform vertical datum transformations to eliminate the need to post-process Z values
- Leverage 3D, layer-based snapping
- Convert existing layers to 3D
- Display alternate data in the “MultiView”

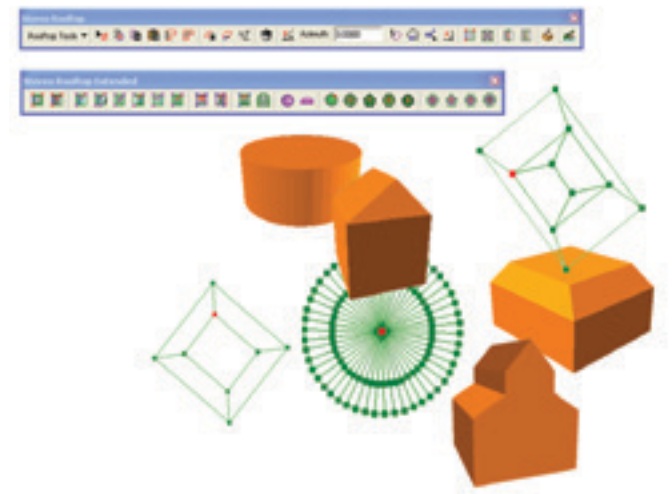


ERDAS TERRAIN EDITOR FOR ARCGIS

- Display terrain as points, lines, and triangles with contours
- Use dedicated modification tools to work with points, breaklines, or areas of the terrain
- Dynamically update contours in the stereo window during editing
- Construct and manage custom bulldozer templates
- Generate new, additional points for the terrain with automatic correlation

FEATURE ASSIST FOR ARCGIS

- Collect common roof shapes using 27 available templates
- Fine-tune the match between the template and your exact roof shape using convenient rubber-banding lines
- Construct any shape required with freeform manual construction tools
- Easily perform basic changes such as reshaping, copying, and pasting
- Generate 3D models with the roof outlines by creating walls that extend from the rooftops to the ground
- Leverage multiple snapping options, including face, vertex, edge, and guideline snapping



FeatureAssist provides an array of templates to assist complex rooftop generation.

DEFENSE FORMATS FOR STEREO ANALYST

Available for US Defense customers only, the Defense Formats add-on to Stereo Analyst enables the direct use of the MC&G (Mapping, Charting, and Geodesy) sensor model and TFRD (Tape Format Requirements Document) imagery in the Stereo Window. Qualifying customers should contact their Hexagon Geospatial sales representative for more information.

About Power Portfolio

The Power Portfolio from Hexagon Geospatial combines the best photogrammetry, remote sensing, GIS and cartography technologies available. Flowing seamlessly from the desktop to server-based solutions, these technologies specialize in data organization, automated geoprocessing, spatial data infrastructure, workflow optimization, web editing, and web mapping.



The Producer Suite enables you to intelligently author, analyze, process, and map multiple sources of data.

About Hexagon Geospatial

Geospatial is part of Hexagon, a leading global provider of information technologies that drive productivity and quality across geospatial and industrial enterprise applications. Learn more at hexagon.com.